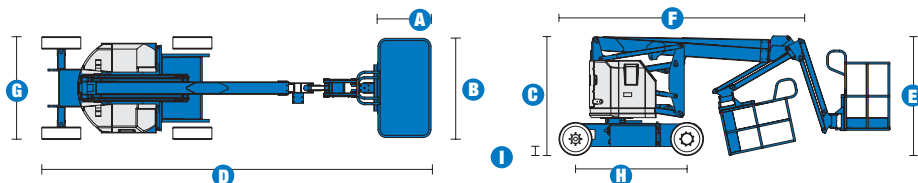


Specifications



MODEL Z™-34/22N

| MEASUREMENTS | Metric | US |
|-------------------------------|---------|-------------|
| Working height maximum* | 12.52 m | 40 ft 6 in |
| Platform height maximum | 10.52 m | 34 ft 6 in |
| Horizontal reach maximum | 6.78 m | 22 ft 3 in |
| Up-and-over clearance maximum | 4.65 m | 15 ft 3 in |
| A Platform length | 76 cm | 2 ft 6 in |
| B Platform width | 1.42 m | 4 ft 8 in |
| C Height - stowed | 2 m | 6 ft 6.5 in |
| D Length - stowed | 5.72 m | 18 ft 9 in |
| E Storage height | 2.26 m | 7 ft 5 in |
| F Storage length | 4.19 m | 13 ft 9 in |
| G Width | 1.47 m | 4 ft 10 in |
| H Wheelbase | 1.88 m | 6 ft 2 in |
| I Ground clearance - centre | 14 cm | 5.5 in |

PRODUCTIVITY

| | | |
|--|-----------------------|-------------------|
| Lift capacity | 227 kg | 500 lbs |
| Platform rotation | 180° | 180° |
| Vertical jib rotation | 139° (+72°/-67°) | |
| Turntable rotation | 355° non-continuous | |
| Turntable tailswing | zero | zero |
| Drive speed - stowed | 6.4 km/h | 4.0 mph |
| Drive speed - raised** | 30 cm/s | 1 ft/s |
| Gradeability*** | 35% | 35% |
| Turning radius - inside | 2.13 m | 7 ft |
| Turning radius - outside | 4.10 m | 13 ft 5 in |
| Controls | 24 V DC proportional | |
| Tyres (solid rubber, non-marking, treaded) | 56 cm x 18 cm x 45 cm | 22 x 7 x 17.75 in |

POWER

| | | |
|-------------------------|--|---------|
| Power source | 48 V DC (eight- 6 V batteries 315 Ah capacity) | |
| Auxiliary power unit | 24 V DC | 24 V DC |
| Hydraulic tank capacity | 15.1 L | 4 gal |

SOUND & VIBRATION LEVELS

| | |
|---|---|
| Sound pressure level (ground workstation) | <70 dBA |
| Sound pressure level (platform workstation) | <70 dBA |
| Vibration | <2.5 m/s ² <8 ft 2 in/s ² |

WEIGHT****

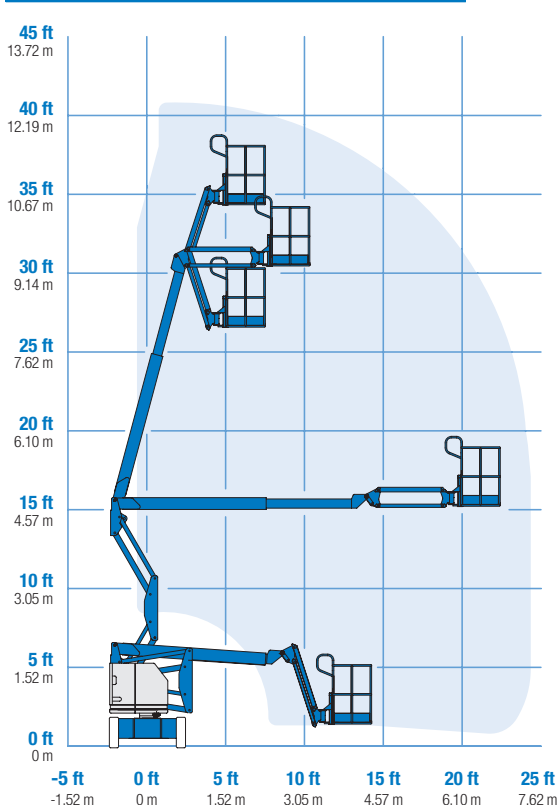
| | | |
|--|----------|------------|
| | 5,171 kg | 11,400 lbs |
|--|----------|------------|

STANDARDS COMPLIANCE

EU Machinery Directive 2006/42/EC
 EU Standard EN280:2001, A2:2009
 EMC Directive 2004/108/EC EN 61000-6-2, EN 61000-6-4
 EU Low Voltage Directive 206/95/EC EN 60204-1:2006

* The metric equivalent of working height adds 2 m to platform height. U.S. adds 6 ft to platform height.
 ** In lift mode (platform raised), the machine is designed to operate on firm, level surfaces only.
 *** Gradeability applies to driving on slopes. See Operator's Manual for details regarding slope ratings.
 **** Weight will vary depending on options and/or country standards.

RANGE OF MOTION Z™-34/22N



Features

EASILY CONFIGURED TO MEET YOUR NEEDS

PLATFORM OPTIONS

- Steel 1.42 m (4 ft 8 in) (standard)
- Steel 1.17 m (3 ft 10 in)

JIB

- 1.22 m (4 ft) jib boom

POWER

- 48 V DC power source

DRIVE

- 2 x 4

TYRES

- Solid rubber non-marking



STANDARD FEATURES

MEASUREMENTS

- 12.52 m (40 ft 6 in) working height
- 6.78 m (22 ft 3 in) horizontal reach
- 4.65 m (15 ft 2 in) up-and-over clearance
- Up to 227 kg (500 lbs) lift capacity

PRODUCTIVITY

- 1.22 m (4 ft) jib boom with 139° working range
- Self-levelling platform
- Hydraulic platform rotation
- Fully proportional controls
- Thumb rocker steer
- Drive enable
- AC power to platform
- Horn
- Hour meter
- Tilt alarm
- Descent alarm
- Alarm package (flashing beacon & travel alarm)
- 355° non-continuous turntable rotation
- Zero tailswing
- Certified load sensor

POWER

- 48 V deep cycle battery pack
- 24 V DC auxiliary power
- Universal 30 A battery smart charger

OPTIONS & ACCESSORIES

PRODUCTIVITY

- Platform swing gate
- Half-mesh platform inserts with swing gate
- Air line to platform
- Power to platform (incl. plug, socket and ground fault interrupt leakage on request)
- Light package: 2 chassis mounted drive lights, 2 platform mounted work lights
- Hostile environment kit: cylinder bellows, boom wiper seals, platform control box cover
- Low temperature cut-out module
- Fire resistant hydraulic oil
- Biodegradable hydraulic oil
- Tilt cut-out option
- Tool tray
- Fluorescent tube caddy*
- Platform work lights
- Lockable platform control box cover

POWER

- Battery charge indicator (BCI)
- Low voltage interrupt with BCI

*Available aftermarket only

Enquiries from Europe:

Tel: +31 165 519 361
Fax: +31 165 511 148
Email: AWP-InfoEurope@terex.com

Offices:

France

Tel: +33 (0)2 37 26 09 99
Fax: +33 (0)2 37 26 09 98

Germany

Tel: +49 (0)4221 491 810
Fax: +49 (0)4221 491 820

Spain

Tel: +34 93 572 50 90
Fax: +34 93 572 50 91

Scandinavia

Tel: +46 31 57 51 00
Fax: +46 31 57 51 04

The Netherlands

Tel: +31 165 519 361
Fax: +31 165 511 148

UK

The Maltings
Wharf Road
Grantham NG31 6BH
UK
Tel: +44 (0)1476 584333
Fax: +44 (0)1476 584334

Middle East

Tel: +971 4 399 0381
Fax: +971 4 399 0382
Email: AWP.Infome@terex.com

Russia & CIS countries

Tel: +7 495 660 32 30
Fax: +7 495 660 32 29
Email: info@terexrus.ru

Corporate Headquarters:

United States

18340 NE 76th Street
P.O. Box 97030
Redmond, WA
USA 98073-9730
Tel: +1 425 881-1800
Fax: +1 425 883-3475

Distributed By: